



**1919 Hidden Hollow Lane**  
 North on 8th, Right on Albert Drive  
 (1 Block) Left on Hidden Hollow

**REALTOR CO-BROKE 3%**

# St. Vincent



**FEATURES**

- Approximately 1,496 Square Feet
- Master Suite with large Walk-in Closet
- 2nd Bedroom or Study/ Office
- 2 Full Bathroom Included
- Optional 3rd Bedroom and 3rd Bath on lower level
- Bright Sunroom with patio doors
- 12 x 14 Patio Included
- Appliance package included
- Tray Ceilings with Rope Lighting
- Central Air Conditioning
- Egress Window
- Lower Level Full Bath Rough In
- Zero-step entry
- Covered Front porch

Here is a perfect open concept home for an improved lifestyle by making life simpler. We can right-size you into something more manageable. 2/3 Bedroom 2/3 Bath, or you can customize the interior to your personal needs.

Zero Entry, covered porch, 1st floor laundry. Ask us about all the features and benefits this new home offers you. See optional upgrades list for personalization and customization to meet your individual needs and desires! A MUST SEE !

**Pricing Starting at \$209,900\*\***



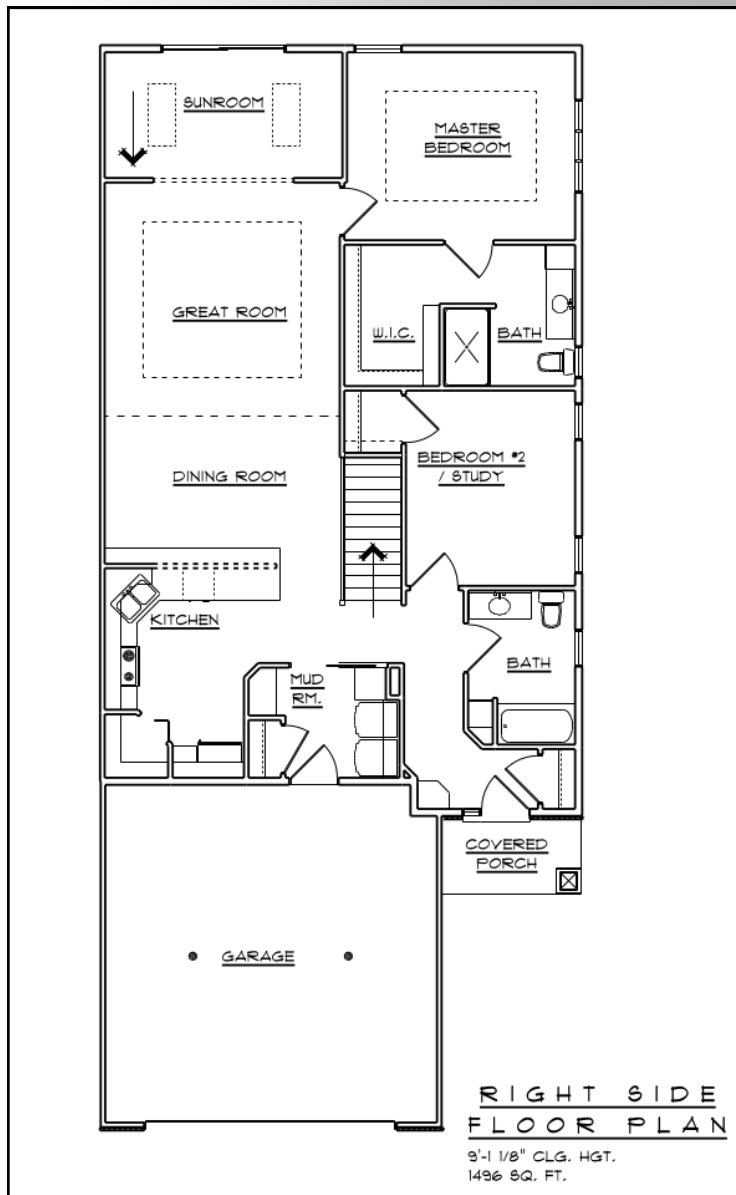
**John O. Shaline**  
 Phone: (920) 347-1220  
 Cell: (920) 619-2923  
 Email: john@tsdllc.net

**Built  
 By:**



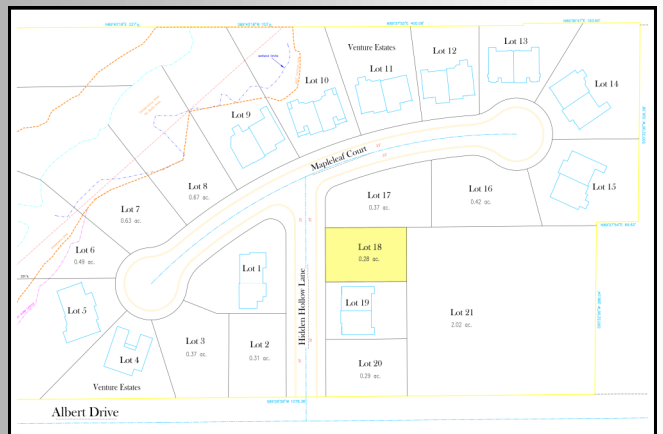
The Information contained herein is provided for general information purposes only. If the above information is material or is being utilized to determine to purchase the property, then the buyer should personally verify, or have it verified by a qualified expert. The information being provided is independently confirmed, to include, but not limited to total square feet, land, buildings and any or all total dimensions of land, buildings, or measurements.

*Dream It. You Can Have It.*



**APPROXIMATE ROOM DIMENSIONS:**

- Living Room            15 X 15
- Kitchen/Dinette       15 X 22
- Master Bedroom       12 X 15
- Master Bath            09 X 15
- Bedroom 2              11 X 12.5
- Sunroom                08 X 15
- Garage                 20 X 22
- 3rd Bed/Bath          Lower Level



Copyright Notice: All plans, designs, and illustrations are the property of Total Service Development, LLC and are copyright protected. Reproduction in whole or in part of any such plans, designs, or illustrations without the express written consent of the copyright owner is strictly prohibited by copyright laws. If you are interested in any plans, designs, or illustrations contact Total Service Development, LLC.