



To Be Built* (CHOOSE A LOT)
North on 8th, Right on Albert Drive
(1 Block) Left on Hidden Hollow

REALTOR CO-BROKE 3%

The St. Thomas I



FEATURES

- 1702 Square Feet
- 2/3 Bedrooms and 2/3 Bathrooms
- Bright Sunroom with patio doors
- Natural Gas Fireplace with Fan
- Appliance package included
- Tray Ceilings with Rope Lighting
- Solar-tube Skylights
- Central Air Conditioning
- Lower Level exposed windows / Optional Walkout
- Lower Level Full Bath Rough In
- Zero-step entry
- Covered Front porch
- Partial Covered Deck
- Heated Garage Included
- Large Walk-In Closets

Here is a perfect open concept home that meets the needs of everyone. Or are you looking to make life simpler by right- sizing into something more manageable. 2/3 Bedroom 2/3 Bath, split bedroom ranch, fireplace, or you can customize the interior to your personal needs.

Zero Entry, covered porch, 1st floor laundry. Ask us about all the features and benefits this new home offers you. A MUST SEE !

Pricing Starting at \$237,500**

**** Subject to
Lot Choice**



John O. Shaline
Phone: (920) 347-1220
Cell: (920) 619-2923
Email: john-tdllc@tds.net

Built

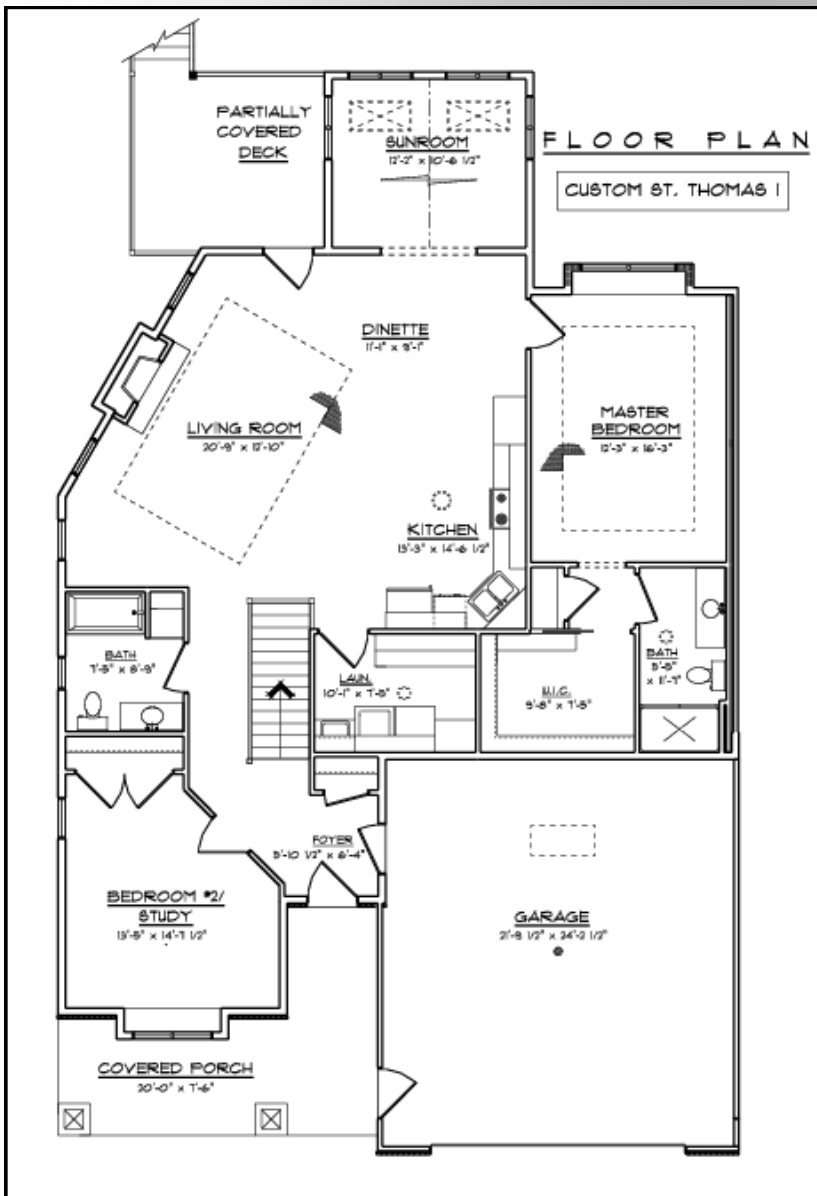
By:

**TOTAL SERVICE
DEVELOPMENT, LLC**

(Since 1976)

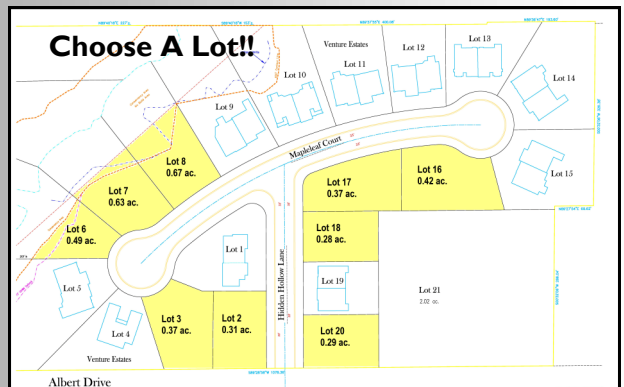
The Information contained herein is provided for general information purposes only. If the above information is material or is being utilized to determine to purchase the property, then the buyer should personally verify, or have it verified by a qualified expert. The information being proved is independently confirmed, to include, but not limited to total square feet, total square footage, land, buildings and any or all total dimensions of land, buildings, or measurements.

Dream It. You Can Have It.



ROOM DIMENSIONS:

- Living Room 21 X 13
- Dining Room 11 X 09
- Kitchen 13 X 15
- Master Bedroom 12 X 16
- Master Bath 05 X 12
- Bedroom 2 13 X 15
- Sunroom 12 X 11
- Bedroom 3 Lower Level
- Heated Garage 22 X 24



Copyright Notice: All plans, designs, and illustrations are the property of Total Service Development, LLC and are copyright protected. Reproduction in whole or in part of any such plans, designs, or illustrations without the express written consent of the copyright owner is strictly prohibited by copyright laws. If you are interested in any plans, designs, or illustrations contact the Total Service Development, LLC